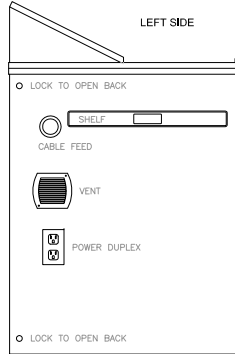
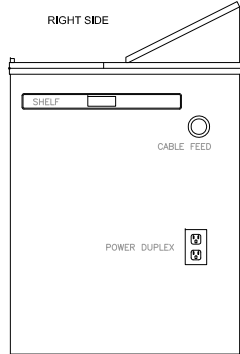
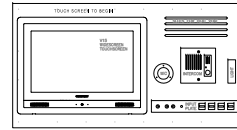
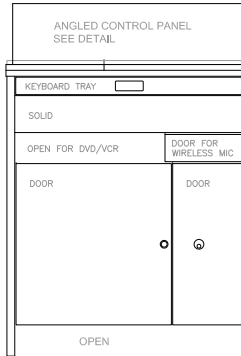




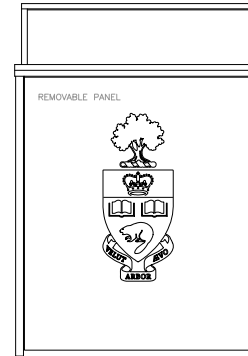
CONTROL PANEL VIEWED STRAIGHT ON



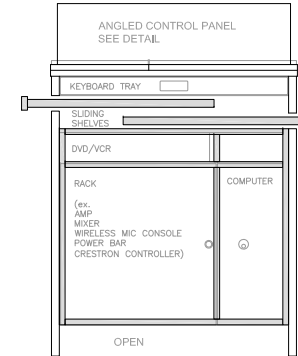
FRONT (INSTRUCTOR'S VIEW)



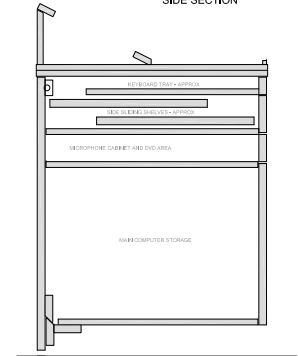
BACK (STUDENT'S VIEW)



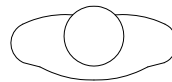
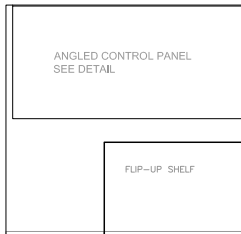
INSIDE (FROM FRONT)

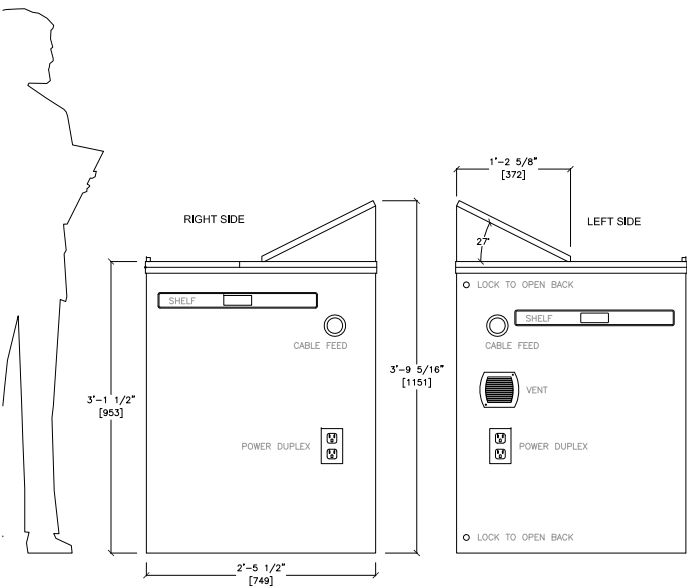


SIDE SECTION

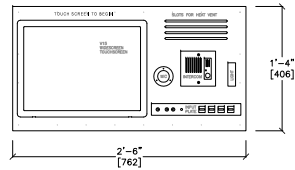


PLAN VIEW

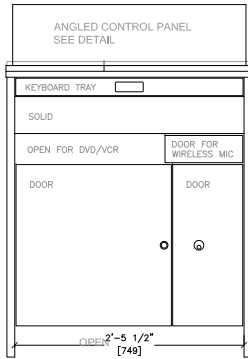




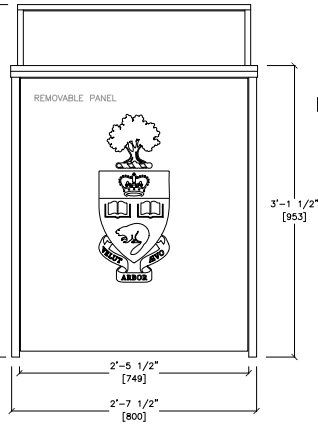
CONTROL PANEL VIEWED STRAIGHT ON



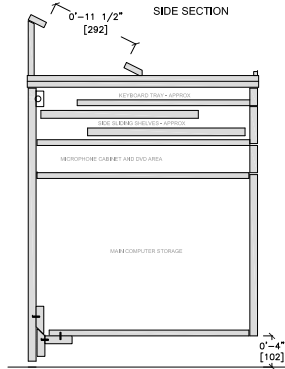
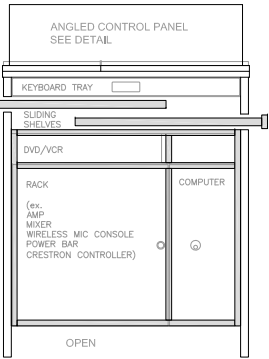
FRONT (INSTRUCTOR'S VIEW)



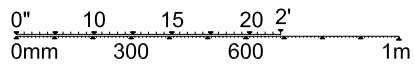
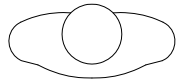
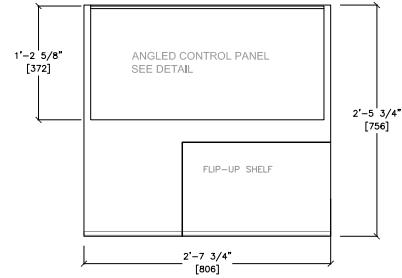
BACK (STUDENT'S VIEW)



INSIDE (FROM FRONT)



PLAN VIEW

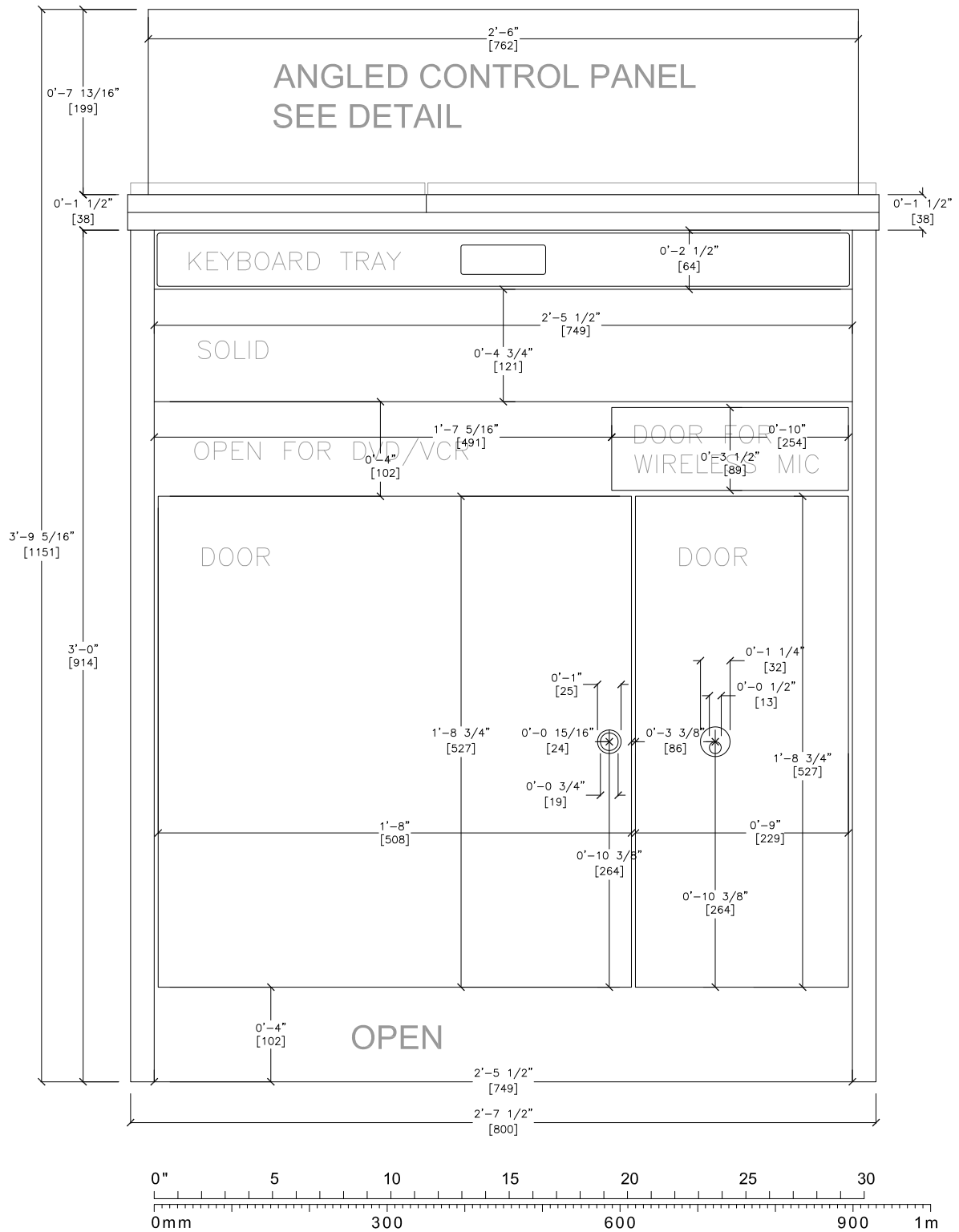


UNIVERSITY of TORONTO  
Office of Space Management  
www.osm.utoronto.ca

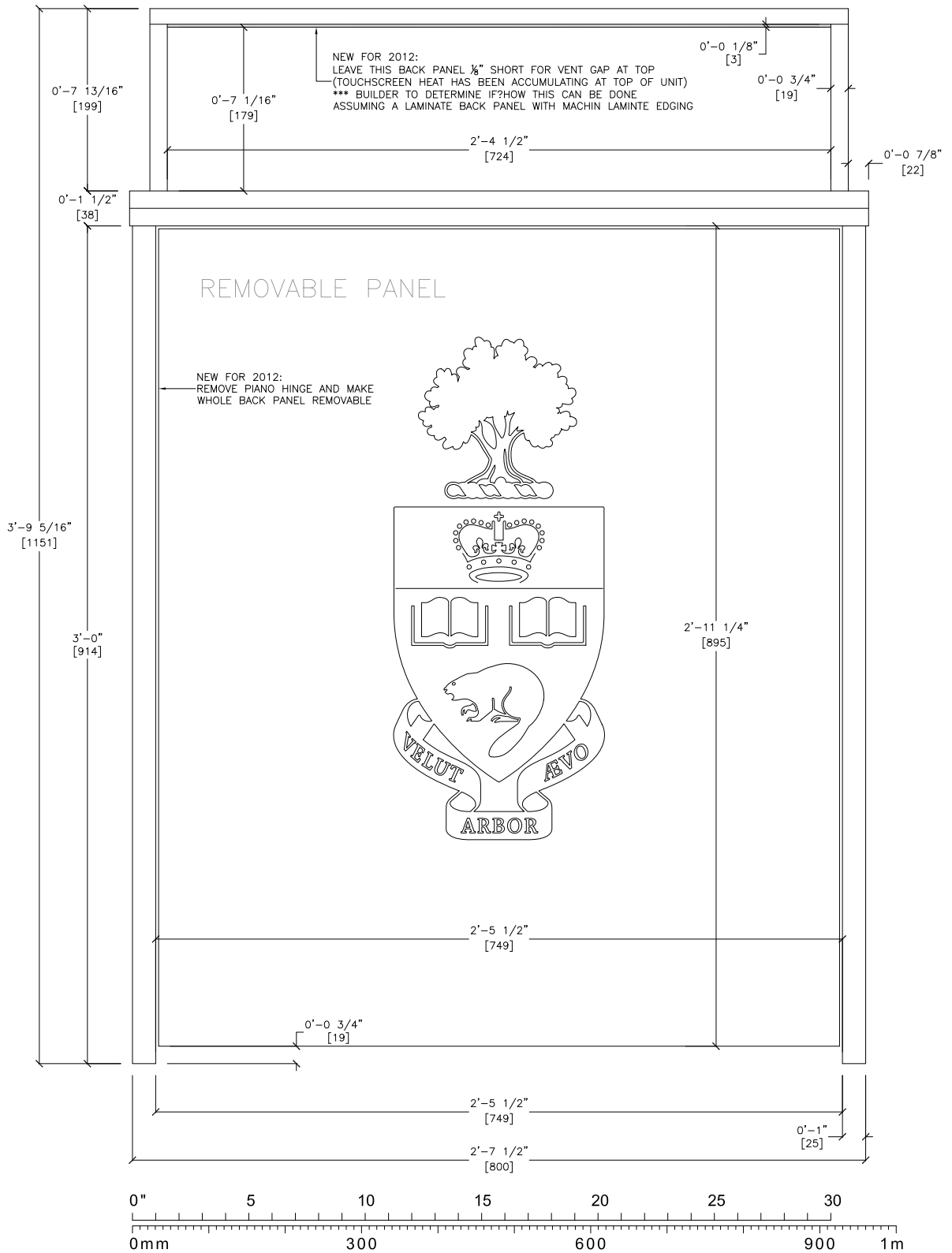
PROJECT: non-specified  
DATE: March 2012  
ISSUE: TS dims  
SCALE: on drawing  
DRAWING: burf.crone@utoronto.ca

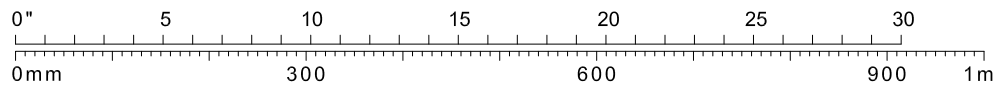
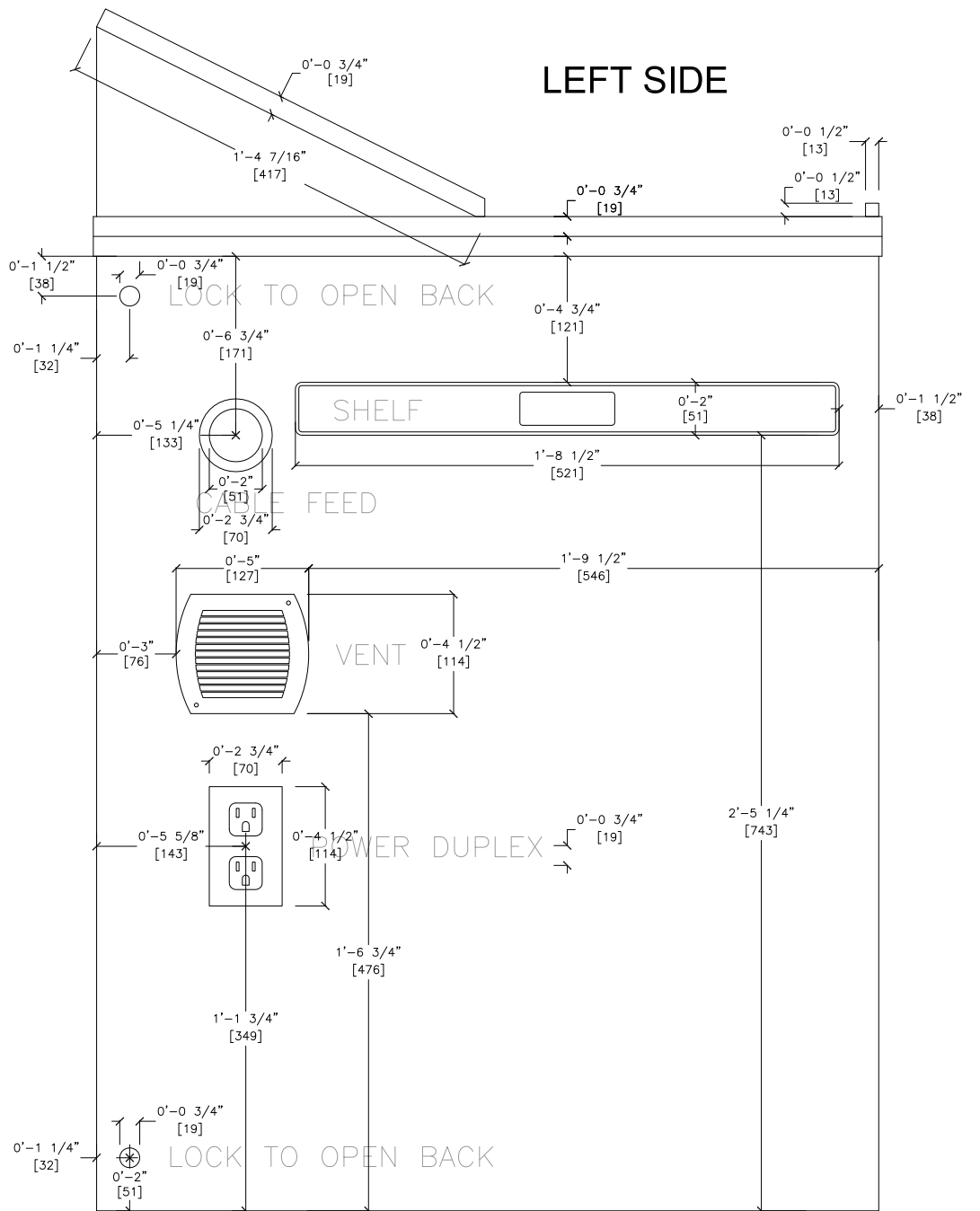
TEACHING STATION DIMS  
Drawn from Physical unit Feb 2011  
New widescreen V15 touchscreen and  
removable back panel added Mar 2012

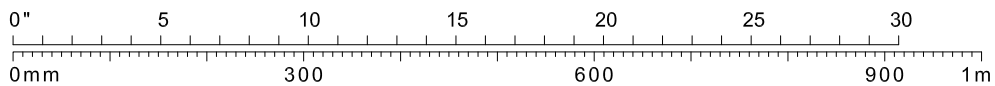
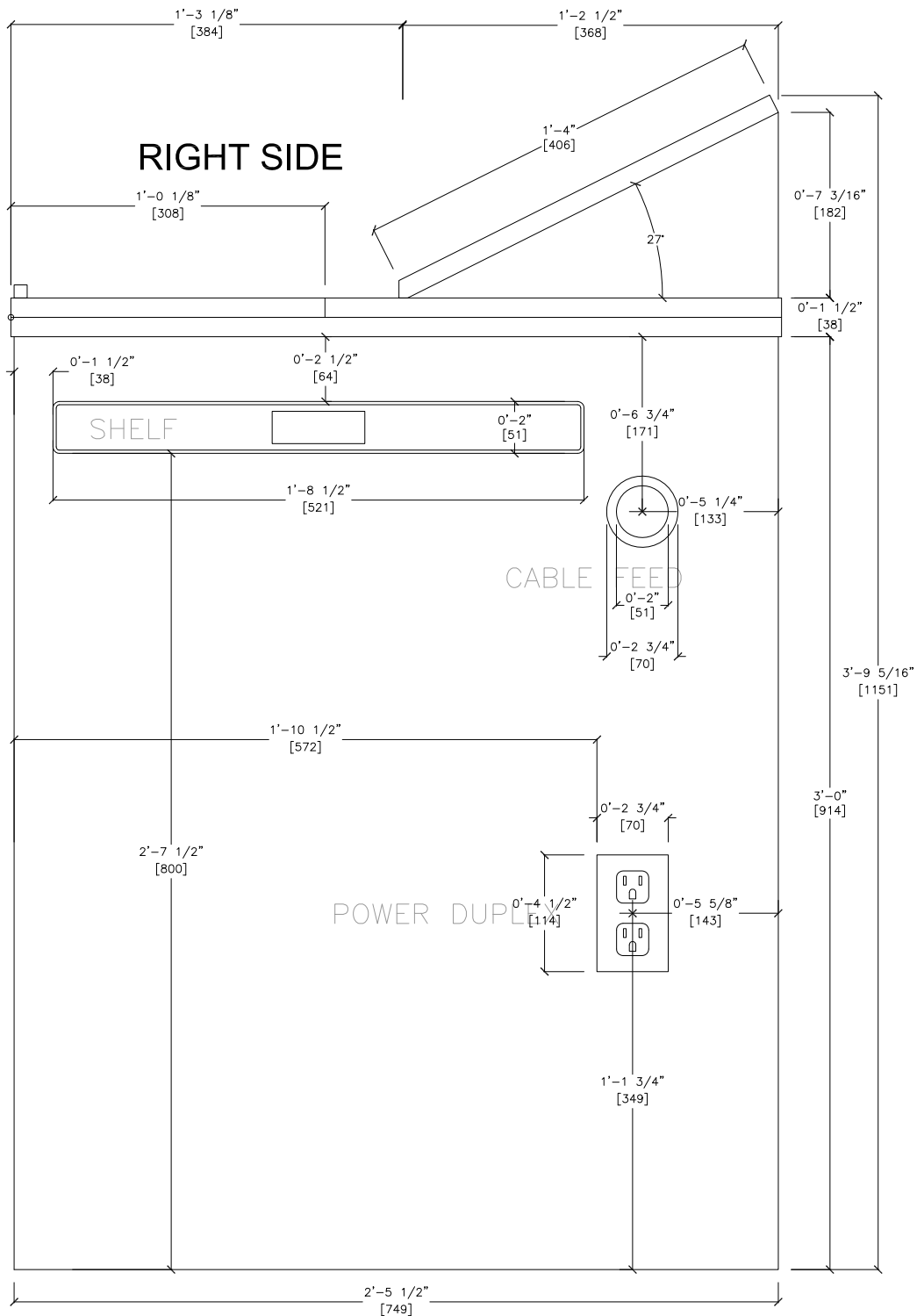
# FRONT (INSTRUCTOR'S VIEW)



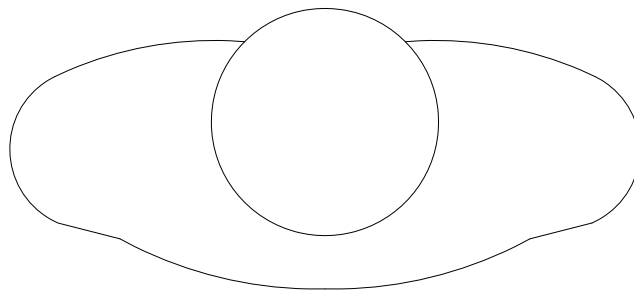
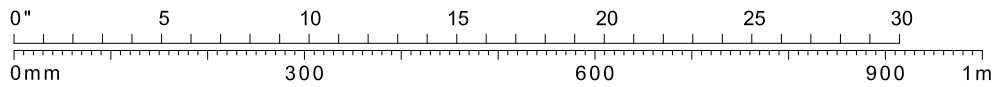
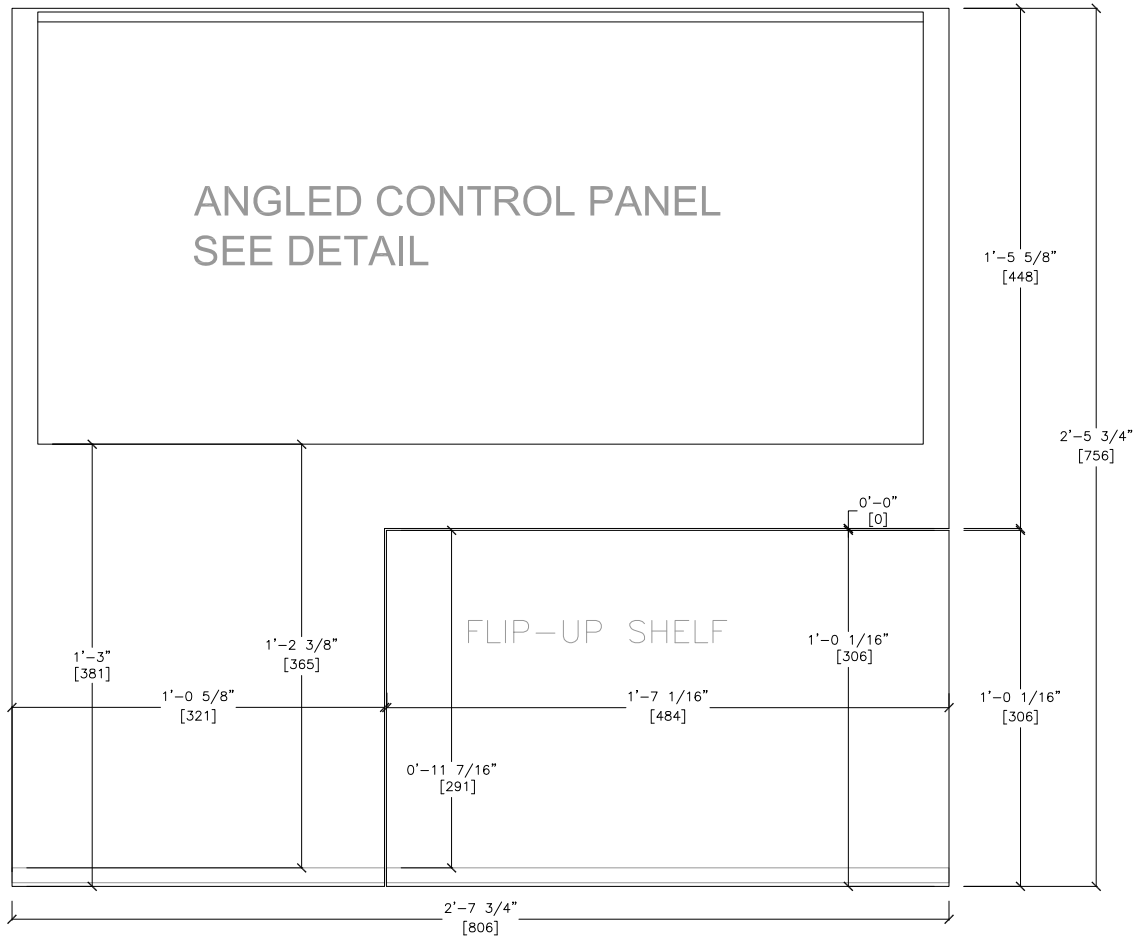
# BACK (STUDENT'S VIEW)



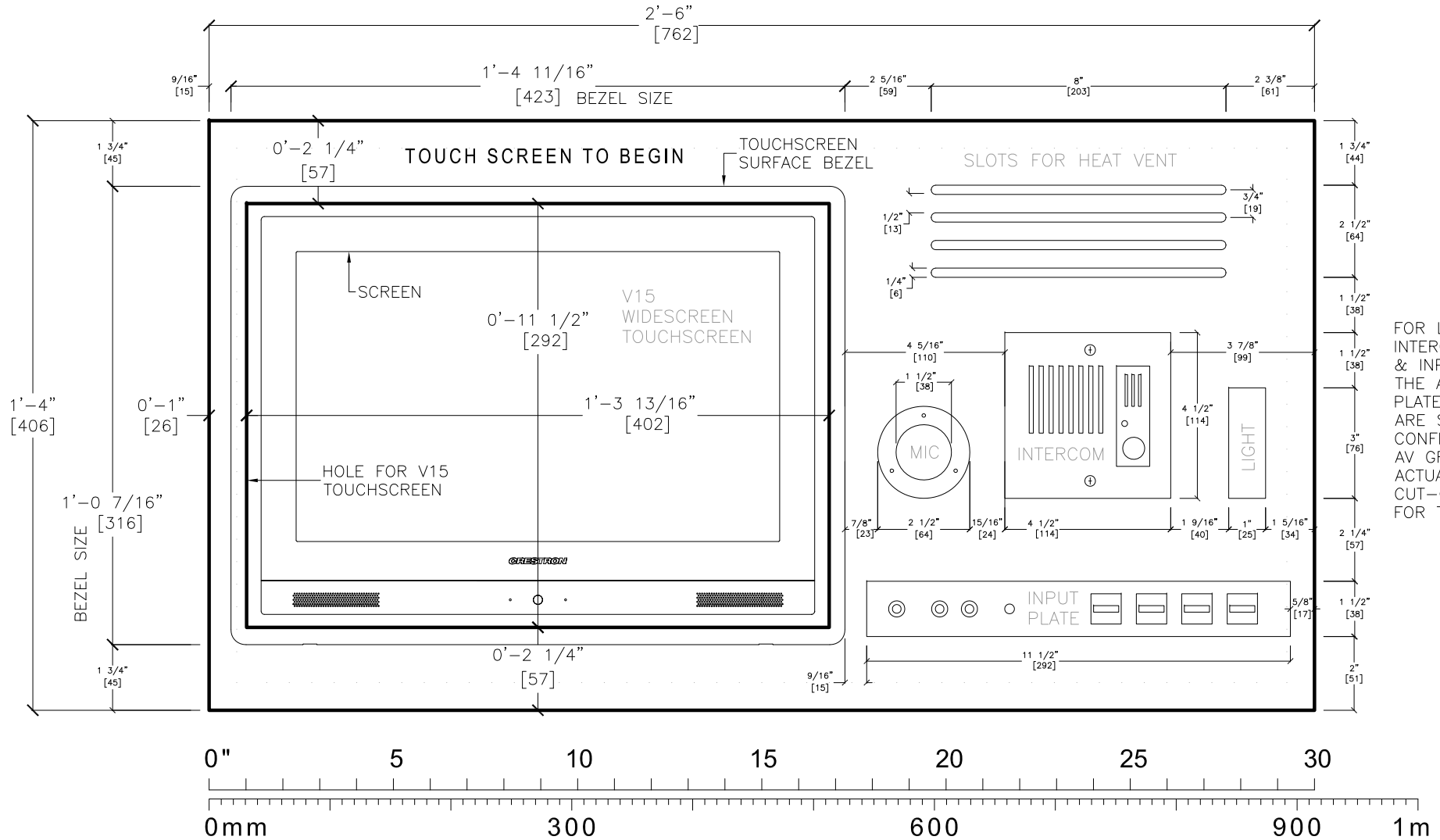




# PLAN VIEW



# CONTROL PANEL VIEWED STRAIGHT ON - V15 WIDESCREEN

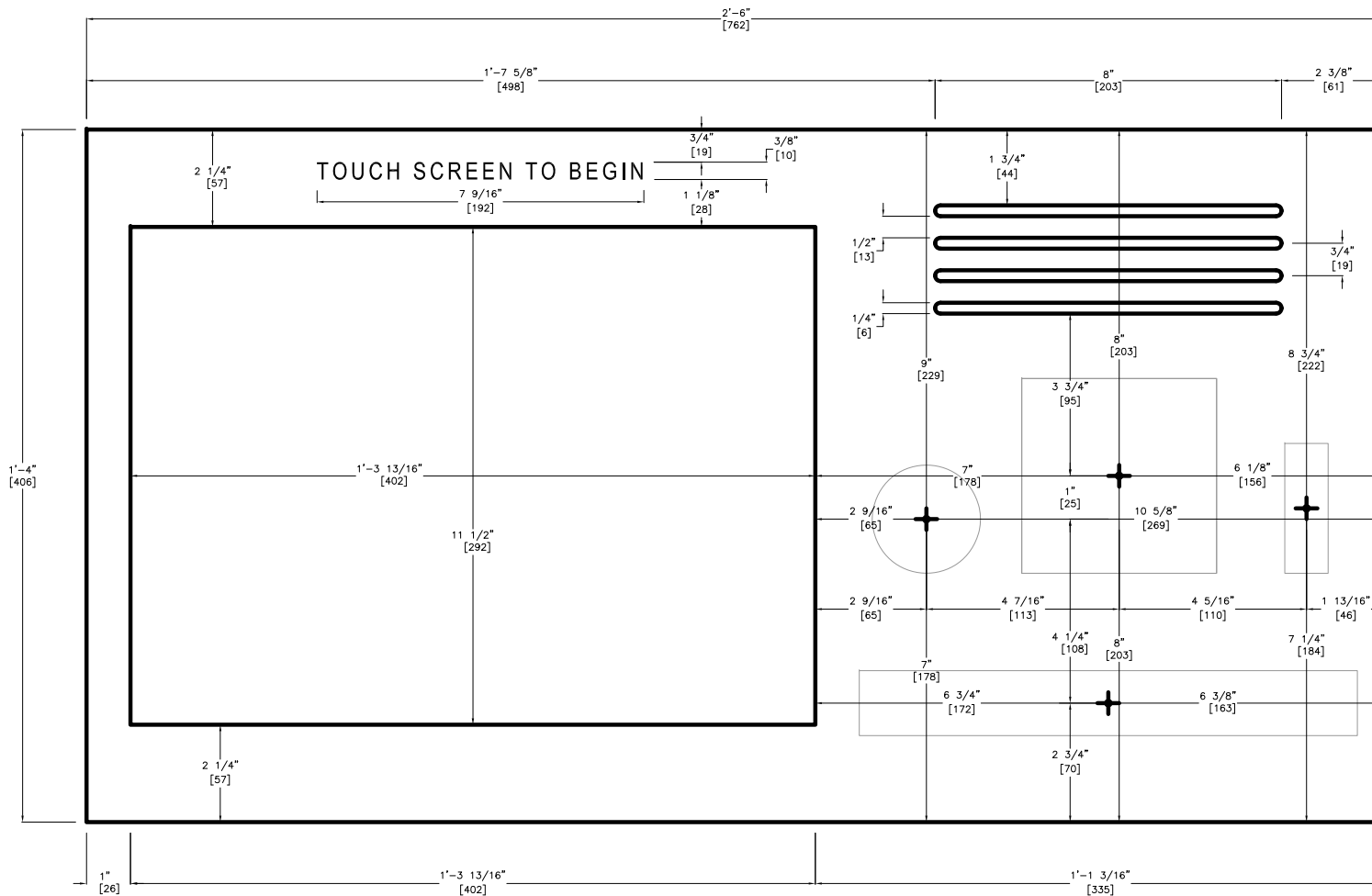


FOR LIGHT, INTERCOM, MIC & INPUT PLATE THE ACTUAL PLATE SIZES ARE SHOWN; CONFIRM FROM AV GROUP THE ACTUAL CUT-OUT SIZE FOR THESE





# CONTROL PANEL COMPONENT CENTER MARKS



# INSIDE (FROM FRONT)

